

# QuailTracks



Volume 29, No. 4 Circulation 6400

October, November, December 2018

San Diego  
BOTANIC  
GARDEN

# San Diego BOTANIC GARDEN

## BOARD OF TRUSTEES

**Chair:** John DeWald

**Vice Chair:** Martin Dickinson

**Vice Chair:** Pete Elkin

**Vice Chair:** Marcia Hall Brockett

**Treasurer:** Mark Dowling

**Secretary:** Joyce Wilder

**President / CEO:** Julian Duval

**Directors:**

Larry Campbell

Martin Cassell

John Clark

Allan Dodds

Marjorie Fox

Mary Friestedt

Andy Grant

Frank Mannen

Arlene Prater

William Rawlings

Adam Robinson

Suzy Schaefer

Matt Stamper

Kathleen Thuner

Tim Wright

**MISSION STATEMENT:** *To inspire people of all ages to connect with plants and nature.*

SAN DIEGO BOTANIC GARDEN SDBGarden.org



230 Quail Gardens Drive, Encinitas, CA 92024 • 760/ 436-3036 (phone) 760/ 632-0917 (fax) • Monday – Friday, 9 AM – 5 PM

### Senior Leadership

President/CEO • Julian Duval	202
Director of Operations • Sam Beukema	203
Director of Development • Carolyn Zollars	216
Director of Horticulture • Tony Gurnoe	211
Director of Education • Susanne Brueckner	222

### Admissions

Lori Dunne, Cheryl Mergenthaler, Mary Lou Morgan	207
--	-----

### Development / Membership / Corporate Partnerships & Sponsorships

Director of Development • Carolyn Zollars	216
Manager of Membership & Development Events • Doreen Prager	218
Development Assistant • Susan Parker	217
Membership Assistant • Wendy Czech	215
Membership Assistant • Lori Dunne	215
Membership Assistant • Beth Moss	215
Membership Assistant • Josh Pinpin	214

### Education

Director of Education • Susanne Brueckner	222
Education & Events Coordinator • Kimberly King	201
Education & Events Coordinator • Caren Clayton	204
Youth Education Assistant • Stephanie Murphy	222

### Facilities

Facilities Supervisor • Sergio Bautista	212
---	-----

### Gift Shop

Office	209
--------	-----

### Horticulture

Director of Horticulture • Tony Gurnoe	211
Horticulture Manager • Dylan Connolly	220
Curator of Collections • Jeremy Bugarchich	

### Marketing/PR

Marketing/PR Manager • Lisa Reynolds	224
--------------------------------------	-----

### Operations

President & CEO • Julian Duval	202
Director of Operations • Sam Beukema	203
Accounting Assistant • Kathleen Caton	223
Bookkeeping Services • Colleen Walsh, CPA	221
Operations Manager • Michael Fisher	206
Volunteer Manager • Jill Gardner	213

### Reception Desk

	201
--	-----

### Venue Rental

Operations Manager • Michael Fisher	206
Wedding Site Manager • Lita Dantes	205

### Volunteers

Volunteer Manager • Jill Gardner	213
----------------------------------	-----

## The Garden Shops

Open 10 am – 4 pm daily (Closed on Christmas Day)

### Membership Discounts:

10% to Family, Individual and Steward level members

20% to Patron and higher level members

With Fall settling in all through the Garden, it's a great time to stop by our Garden Shops for some cool-weather comfort! In our Gift Shop, you will find cozy accessories with new scarves, hats and soft Garden sweatshirts. And we are continuing our popular line of Root Candles, including the so-soothing Honey Brewed variety.

Our Plant Shop is all ready for the season. This is a major growing season for succulents from the Canary Islands and South Africa – we're stocked and have a beautiful display! We are also excited to highlight California Natives and Subtropical Fruit Trees, propagated here in our Garden. And don't forget our lovely succulent wreaths and topiaries for the holidays – they make memorable gifts from your Botanic Garden!

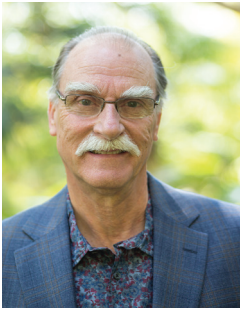
## Thinking of Volunteering at the Garden?

### Come Find Out More at our Next Volunteer Information Session!

Come join us at our next Volunteer Information Session – Friday, November 9! You'll meet interesting, like-minded people, learn about our beautiful Garden and discover how you can get involved. We welcome volunteers with varying interests and passions for the Garden – and value any contribution you would like to make.

Information sessions are from 9:30 am – 12 pm in the Ecker building. They include an introduction to the Garden, multiple staff and Docent presentations, updates on volunteer opportunities and a tour of the Garden. Come on out and join us! Please RSVP to Jill Gardner at [jgardner@sdbgarden.org](mailto:jgardner@sdbgarden.org).





## Message from the President

Julian Duval  
President/CEO

### My Favorite Dream Job

Given that I will be soon retiring from my work at the San Diego Botanic Garden it was suggested that I should recap some of the Garden's accomplishments over the past 24 years I have had the honor to be the Garden's President and CEO.

The Garden has changed a great deal in that time and it began with the motivation that the Garden might close. San Diego County had been experiencing grave financial challenges in the late 1980s and early 90s which resulted in cut backs on the care of the Garden. Thankfully there were two estate gifts that had come to the Quail Botanical Gardens Foundation which allowed it to have a nest egg to lean on when it took over the management of the Garden in October of 1993. Unfortunately, the Garden was in poor condition given some years of cut backs just when direct private support for the Garden would be key to its future. To its visitors and potential donors it did not look like it had much of a future.

I came on board about 18 months after privatization and it was obvious that we needed to focus on improving the visitor experience while adhering to our mission. The wonder and beauty of nature has always been my main squeeze (next to my wife Leslie of course) and my career in zoo work prior to coming to the Garden has always been about how to share that wonder and beauty with others. The San Diego Botanic Garden (although it will always be Quail Botanical Gardens to me) provided an absolutely perfect environment for that. Over the years the Garden has really been made anew. Making the Garden particularly pertinent for families with children is a crowning achievement and when we open the Dickinson Family Education Conservatory later this year we will have placed the most significant jewel in the SDBG crown.

Measures of the Garden's growth could not be more clear.

Our annual operating budget went from just over \$500K to now exceeding \$3M. Our annual attendance has gone from just over 100K to now 300K. SDBG even won the distinction as one of the 10 public gardens in North America worth visiting in 2017 as judged by the American Public Garden Association. Now these things of course have come about due to the hard work of so many talented employees, volunteers and, of course, our donors all of which have also grown in numbers over the years. The credit I deserve is solely based on all those same employees, volunteers and donors who shared my vision and whose support made it possible for me to do my job.

So at this time no one doubts that the Garden has a future and in fact everyone believes it is guaranteed. The most recent indication of that success is that we were able to attract a stellar person to become the next President/CEO for the Garden. That person as I am sure you have heard is Dr. Ari Novy. Ari is clearly one of the rising stars in the public garden industry and carries an impressive set of credentials including having been the Executive Director of the U.S. Botanic Garden in Washington DC. Ari and I are working out the details of the transition and I cannot tell you how comforted I am that he will become the next leader of SDBG. A look back is to see a success story for this Garden and I know that under the leadership of Ari, great things are certain as the story continues.



Ari Novy, Ph.D.  
Incoming President & CEO  
San Diego Botanic Garden

It has been my privilege to have spent these years as President and CEO of this wonderful and very special Garden. I am one of those lucky few who have always had his dream job. I worked for two summers as a naturalist for the Cook County Forest Preserve District outside of Chicago while in high school. I then worked at several different zoos between attending New Mexico State University. I even had a job helping to organize and open a new zoo as a Peace Corps Volunteer in Santo Domingo, Dominican Republic. I spent 15 years at the Indianapolis Zoo where Roy Shea, a wonderful zoo director, allowed me great responsibility for helping to design and open a completely new \$64M zoo.

But of all those dream jobs I cannot think of a better cap to my career than these last 24 years spent as an important part of the family who loves and nurtures the San Diego Botanic Garden.



## Dickinson Family Education Conservatory Opening Soon!

SDBG staff stands in front of the 30-foot tall Dickinson Family Education Conservatory, set to open in the coming months. The 8,200 sq. ft. glass and metal structure will exhibit plants from some of the most endangered tropical ecosystems in our world through its "living plant chandeliers" and "floating plant islands."

To learn how you can invest in this unique educational facility, contact Carolyn Zollars at [czollars@sdbgarden.org](mailto:czollars@sdbgarden.org) or 760/ 436-3036 x216 or visit our website at [SDBGarden.org](http://SDBGarden.org).



Photo: Rachel Cobb

# Upcoming Events

## San Diego Botanic Garden Orchid Clinic

Saturday, October 6

10 am - 3 pm

Participants can choose to attend one or all of the four great education sessions offered during the Orchid Clinic. Each session is presented by local expert orchid growers who will impart valuable, easy-to-use information on how to select, grow and care for orchids.

10 am – Nico Goossens – How to rebloom your orchids (Understanding the natural triggers that allow orchids to bloom)

11 am – Don Doerfler – What do I do with my orchid after I bring it home?

1 pm – John Oswalt – Orchid growing basics. Tips and lessons learned.

2 pm – Dave Hoffmaster – How to repot your orchid demonstration

**Cost: Free with paid admission or membership. Free for AOS members (must show card).**

**PUBLIC IS INVITED TO SHOP THE ORCHID SALE**

## 36th Annual Fall Plant Sale

Saturday & Sunday, October 20 & 21

10 am – 4 pm

Monday, October 22

9 am – 12 pm

**SDBG MEMBERS GET IN EARLY TO FALL PLANT SALE ON SATURDAY!!**

**Larabee & Benefactor Society Members**

**Pre-Sale Hour:**

**Saturday, October 20**

**8 - 9 am**

**Basic Members Pre-Sale Hour:**

**Saturday, October 20**

**9 - 10 am**

Members at basic levels are invited to upgrade their membership to Steward Level (\$150 - \$10,000+) to enjoy early access to the Fall Plant Sale! Renew or upgrade your membership today by calling Josh at 760/436-3036 x214.

Plant donations from over 100 local growers, wholesalers, retail nurseries, and individuals make this one of the most interesting and diverse plant sales in all of San Diego County!

Come see the incredible deals only we can offer on California natives, cacti, succulents, bromeliads, fruit trees, and sub-tropical plants.

Visit our Botanic Attic for garden-related items. And be sure to check out our huge selection of used books and homemade goodies such as specialty jellies. Enjoy an opportunity drawing and our popular sit-down Bakery Shoppe located in the Ecke Building, which serves cakes, cookies, pies, and coffee.

**Cost: Free for Members. Non-Member Adult Admission Pricing: Saturday \$18; Sunday \$5; Monday \$5 (9 am - 12 pm only)**



**Like us on Facebook!  
Get exclusive information on  
your favorite SDBG events!**

## Cactus and Succulent Show and Sale

Saturday, October 27, 9 am – 5 pm

Sunday, October 28, 10 am – 3 pm

See spectacular succulent specimens from around the world – and add them to your collection – at the annual Palomar Cactus and Succulent Society Show & Sale at the Garden. Check out award-winning show plants, available for viewing both Saturday and Sunday. Winners of the show are announced at 1 pm on Saturday and will be on display throughout the entire weekend. Don't miss this unique show and sale! Plants that both the novice and the collector will enjoy, as well as handmade ceramic pots, driftwood planters, and more unique items are all available.

**Cost: Free with paid admission or membership**

## Garden of Lights

December 1 – 23 & 26 – 30

5 – 8:30 pm

After the sun goes down, the Garden is transformed into a dazzling winter wonderland with over 125,000 sparkling lights illuminating the Garden for a magical holiday experience!

Festive holiday activities abound including sledding and horse-drawn wagon rides (on select evenings), holiday crafts, marshmallow roasting, visits with Santa (December 1 - 23), food trucks, hot mulled wine, beer and refreshments. Enjoy great live entertainment every single night 6 – 8 pm!

**Details and schedules of food trucks, snow delivery for best sledding conditions, live entertainment, and admission pricing can be found on our website at [SDBGarden.org/lights.htm](http://SDBGarden.org/lights.htm)**

Garden of Lights is sponsored by the County of San Diego



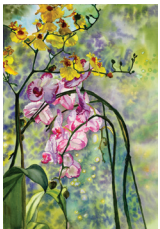
## Botanica

Flowers, Foliage & Botanically-Inspired Art Works from Oceanside Museum of Art Artist Alliance

Sunday, September 30 – Thursday, November 1

Ecke Building

9 am – 5 pm



Come enjoy the flowers, foliage and botanically-inspired art works created by members of the Oceanside Museum of Art (OMA) Artist Alliance. The Alliance is a group of OMA affiliated members which provides opportunities for regional artists to grow and show their work together. The Garden is pleased to host this new exhibition, juried by Naomi Nussbaum. The public is invited to the opening reception on Sunday, October 14 from 1-3 pm. Selected works will be available for sale.

**Cost: Free with paid admission or membership. Reception is included with paid admission or membership on Sunday, Oct. 14.**



Photo: Rachel Cobb

**Sculpture in the Garden  
Now - April 2019**

# Fall Classes

To see full class descriptions, and to register, go to [SDBGarden.org/classes.htm](http://SDBGarden.org/classes.htm) or call 760/ 436-3036 x201. All classes are for ADULTS ONLY (18+)

## Forest / Nature Bathing

**Sunday, October 7, 9 – 11 am**

**Sunday, November 4, 9-11 am**

**Sunday, December 2, 9-11 am**

Description: Shinrin-yoku or Forest Bathing is a way of connecting people to Nature. This idea, and the positive health effects of simply being and walking in a state of relaxation in nature, has undergone significant scientific testing and validation in Japan and Korea. This innovative programming is trending in gardens and nature reserves across the country. Register today! This class will sell out fast. Instructor: Rhana Kozak.

**Cost: Members \$32, non-Members \$40.**

## Living Wall / Vertical Garden

**Sunday, October 14, 9 am -12 pm or**

**Saturday, November 24, 9 am -12 pm**

Learn the basics of planting a living wall. We will be planting a 10"x20" wall with a variety of succulents. Living walls can be used in the exterior or interior of your home, with multitudes of colors, textures and sizes of succulents available for planting in this class. The possibilities of striking patterns and unique designs are endless. REGISTER EARLY! These classes will sell out!

Instructor: Mary Lou Morgan.

**Cost: Members \$30, non-members \$36, plus an \$80 per student materials fee paid directly to the instructor at the class. Please register by October 5 and November 16.**

## Mosaic Jewelry

**Wednesday, October 10, 12 – 3 pm**

In this class you will make a unique piece of jewelry that expresses your personal, one-of-kind style. Design and complete two mosaic pendants using a variety of beautiful materials such as glass, stone and millifiore. Basic glass cutting techniques and ideal jewelry adhesives will be covered. Materials and tools provided.

Instructor: Marsha Rafter.

**Cost: Members \$55, non-members \$72, plus a \$35 per student materials fee paid directly to the instructor at the class. Please register by October 3.**

## Halloween & Thanksgiving Holiday Centerpiece

**Saturday, October 13, 9 – 11 am**

Create your own Fall centerpiece with a permanent 12-14" white or orange pumpkin decorated with live moss, succulents and artificial botanical flowers. Taught by the SDBG Succulent Wreath Team.

**Cost: Members: \$45, non-members \$54, fee includes materials. Register by October 5.**

## Succulent Mushroom

**Tuesday, October 23, 9 am – 12:30 pm**

Take home a charming succulent mushroom that you make yourself in this class taught by the SDBG Succulent Wreath Team. Students should bring small clippers or scissors to class.

**Cost: Members \$35, non-members \$42, fee includes materials. Please register by October 16.**



## Paper Marbling

**Sunday, October 28, 9 am – 1 pm**

Students will learn how to prepare paper to be marbled. Acrylic paint will be used to float on a prepared solution and raked into patterns to reveal a beautiful marbled design. Please bring an apron and wear old clothing as this can get pretty messy! Instructor: Grace Swanson.

**Cost: Members \$50, non-members \$60, plus a \$20 per student materials fee paid directly to the instructor at the class. Please register by October 22.**

## Mosaic Garden Jewels

**Wednesday, October 31, 10 am – 1 pm**

**& Thursday, November 1, 10 – 11:30 am  
Two Day Class**

Create a beautiful mosaic using ocean rocks and glass beads in this two-day class. Students will learn how

to glue and grout colorful beads to create flowers, plants, or other shapes resulting in attractive garden art.

Instructor: Candy Sharda.

**Cost: Members \$30, non-members \$36, plus a \$30 materials fee is paid directly to the instructor on the first day of class. Please register by October 24.**

## Succulent Wreath

**Saturday, November 10, 9 am – 2 pm**

Take home a beautiful succulent wreath that you make yourself. Taught by the SDBG succulent Wreath Team.

**Cost: Members \$85, non-members \$102, fee includes materials. Register by November 2.**

## Mosaic Mandalas

**Sunday, November 11, 9 am - 4 pm**

In this class, you will be guided to complete a beautiful 12" mosaic mandala from design to grout in one day, using glass gems, stained glass, mirrored glass and ceramic tiles. Become immersed in the symmetry and flow of this circular form. Materials and tools provided. No experience necessary. Instructor: Marsha Rafter.

**Cost: Members \$75, non-members \$90, plus a \$60 per student materials fee paid directly to the instructor at the class. Please register by November 5.**

## Money Tree Kokedama Workshop

**Saturday November 17, 10 – 11:30 am**

Kokedama is a traditional Japanese Living Art form where moss is used as a container for a plant. In this interesting and hands-on workshop, we will make Money Tree Kokedama! You will learn the skills behind Kokedama and how to make your very own. Fee includes all of the supplies to make Money Tree Kokedama, including money tree, moss, soils, etc. This is a unique, fun-to-make Kokedama workshop that you can take home and enjoy, or give as a wonderful living gift. Instructor: Kodema Forest.

**Cost: Members \$15, non-members \$18 plus a \$32 per student materials fee paid directly to the instructor at the class. Please register by November 9.**

# The World's Most Endangered Plants

By Tony Gurnoe  
Director of Horticulture

We have recently added several hundred new rare and endangered plants to our collection, but few have been as exciting as our cycad introductions. Even astute gardeners among us may not be familiar with these strange prehistoric plants, but if you've visited the San Diego Botanic Garden you have certainly encountered them. Approachability is not a strong suit of cycads, so let me introduce you in hopes of imparting a better understanding of why we love working with cycads and feature them so prominently in our exhibits.

Most of the characteristics that make cycads botanically unique stem from their antiquity. Cycad fossils date back 250 or 300 million years ago, and have been found on every continent. During the Mesozoic Era they accounted for 20% of all plant taxa on Earth, implying they were once staple foods for dinosaurs. Unlike dinosaurs, these plants have amazingly survived three mass extinction events. Among all extant plants, cycads were the first to grow from seeds, and some scientists have suggested the first to ever be pollinated by insects.

Cycads were once revolutionary titans of the floral world, but times have changed, and more than half of all species are now threatened. Slow growing cycads can't compete with the rapid rate of habitat destruction and poaching. Additional factors like frost tenderness and plants being individually male or female (dioecious) make cultivated production of cycads challenging. Meanwhile many species are facing imminent extinction in the wild.

*Encephalartos latifrons* is an alarming illustration of the state of cycads. Fewer than 60 individuals remain in their native range within the Eastern Cape Province of South Africa. The population is so fragmented that natural seedlings have not been observed in more than 50 years. The San Diego Botanic Garden is perfectly suited to aid in the preservation of species like *E. latifrons*, not only because of the near permanence of a botanical garden, but also due to the horticultural expertise embodied in our organization. The moderate temperatures and well-draining soils that characterize our Garden make it a perfect place to grow cycads. It's with a significant dose of responsibility then, that we've recently introduced *E. latifrons* to our collection.

Building our living collection and offering these endangered plants a safe place to live and continue to tell their ancient stories is only one aspect of what we offer cycads. We also work with botanical gardens around the country to ensure that we're maximizing the impact of our efforts through pollen exchanges, strategic redistribution of sensitive plants, and sharing of cultivation protocols. To those of us familiar with cycads they represent some of the most storied, botanically curious, and exhibit worthy plants in the garden.

Next time you visit, take a moment to recognize the dramatic journey these cycads have been on to now be growing contently at the San Diego Botanic Garden.



Photo: Rachel Cobb

# This Old House

## Sights and Sounds from Early Times in the 100-Year-Old Larabee House

By Sally Sandler  
SDBG Docent & Historian

One hundred years ago, what we now know as the Larabee House was built on a 16.5 acre homestead overlooking the Pacific Ocean. The year was 1918, World War I was ending, and young, aspiring innovators began developing the neighborhoods here and around the Cardiff and Encinitas communities in North San Diego County, California.

One of these was a young mail carrier named Donald Ingersoll, who together with his wife Gertrude (“Nan”) built this 1,000 square foot rustic ranch house and a horse barn and planted some eucalyptus trees. Nan was a vibrant young woman with a “bob” haircut fashionable in the Flapper years, and we can imagine her youthful, exuberant voice heard within these walls. She planted the sugar gum tree by the house which recently died and was restored as a baobab tree sculpture. Her ambitious husband was also in business with Cardiff developer J. Frank Cullen, with whom he put up the house as collateral on a loan. Unfortunately the loan defaulted, and the house and grounds went into foreclosure in 1923. (The Ingersolls later divorced, but Nan lived across the road for many years.)



Waiting outside the court house in 1923 was a tall, industrious Dutchman named Anton van Amersfoort, who took advantage of the fire sale and became the second owner of the Larabee House. A bachelor described as a “jolly fellow,” he may have had a somewhat quieter homestead than the Ingersolls. He planted an avocado grove here and established a number of large trees on the ranch, including

rows of Monterey cypress along the driveway, red-flowering gums along Amersfoort Drive (now Quail Gardens Drive), the Garden’s large Torrey pine trees, and the weeping bottlebrush in the Walled Garden.

Van Amersfoort owned at least 16 other properties in the area—one as large as 80 acres—and became a very successful avocado grower. He was also a director of the newly formed Encinitas Water District. After 20 years of farming and landscaping the property, he moved up the street not far away and married very late in life. Echoes from his large, sturdy work boots might still be imagined around the Larabee House today.



Donald Ingersoll c. 1918



Gertrude “Nan” Ingersoll c. 1918



Anton van Amersfoort c. 1910





Charles Larabee c. 1938



Ruth Larabee (far right) c. 1933

Third in line for ownership was Ruth Baird Larabee from Kansas City, who purchased the 16.5 acres, and with an adjacent parcel of 10 acres created “El Rancho San Ysidro de las Flores.” Ruth and her husband Charles had recently inherited considerable wealth, though by all accounts they were ready to trade the upscale lifestyle of their Kansas City youth for some adventure on the still rugged California coast. The Larabees paneled the living room and fireplace with warm wood and shelving and built an adobe brick wall around the back yard, lending an air of sophistication and California mission style architecture to their rustic home. But boots were still parked outside the house, this time including Ruth’s trademark green rubber ones.

Their homestead was abuzz from their own labor and from garden workers and landscapers teaming up to create the bones for what later became San Diego Botanic Garden. The “Chicago-Chicago” calls of California Quail could be heard on paths outside the house as Ruth fed and nurtured coveys of the little chaparral birds. Young people’s excited

voices were also part of the atmosphere at the Larabee House, since both Ruth and Charles supervised scout groups, sharing their home and the outdoors with many enthusiastic teenagers. No doubt those voices were joined by Ruth’s two barking dogs and again by whinnying horses when Ruth welcomed some of the Girl Scouts to ride here. Wedding music filled the air when Ruth hosted the first nuptials in the Walled Garden in 1949. During these years, the Larabee House was most likely brimming with activity.

Later in the 1950s, however, things quieted down. Ruth and Charles had divorced in 1950. Charles moved to Newport Beach, and Ruth stayed here by herself, gradually doing less gardening, until in 1957 she was ready to donate the house and land to the County to be preserved as a park for her beloved quail.

Sights and sounds around the Larabee House changed during the years between 1960 and 1989, when the residence was briefly occupied by County Park Administrator Gerald Cullison and his family, followed by Supervisor P.J. Miller and wife Chris, and later by Horticulturist Gil Voss and wife Alison. A bedroom and a laundry room were added to accommodate those families.

But echoes from the early days of the Larabee House still beg to be heard. And now celebrating its centennial, this old house is preparing for renovation. The Horticulture Staff offices will be moved from the Larabee House to a more permanent location, and plans are underway to restore the front porch and perhaps other portions of the dwelling. Today the living room is a museum of artifacts from the Larabee years, and the house still echoes with excited young voices, as 21st century brides prepare for their weddings in the historic Walled Garden.



The Larabee House is staffed by Museum Guides, like Stacy Fattaleh (pictured here), and generally open for visitors on the first Tuesday of each month from 10 am – 2 pm.

*Sally Sandler is a Docent and the Garden Historian at San Diego Botanic Garden. She is also the author of “Sowing Seeds of Wonder: The Stories of Ruth and Charles Larabee and the Origins of San Diego Botanic Garden.” The Second, Expanded Edition is available for sale in The Gift Shops at the Garden.*

# The Sapphire Tower

## A Bloom Worthy of Its Regal Name

By Jeremy Bugarchich  
Curator of Collections

Anyone connected to our Garden has one way or another heard of the Sapphire Tower. If you are lucky enough, you may have seen its bloom firsthand. This show stopping plant draws crowds from miles around, just to sneak a peek at its amazing, unearthly-looking flower.

The dark metallic-like turquoise petals sharply contrast (yet compliment) the vibrant orange anthers, with a flower stalk reaching an upwards of 5' tall. The rosy pink bracts along the branching inflorescence further favor this soaring beautiful species. This plant is truly worthy of its regal name! In taxonomic terms, the Sapphire Tower is referred to as *Puya alpestris*. The puya genus is a member of the Bromeliaceae family, also known as the bromeliad family. Air plants, *Tillandsia sp.*, and Urn plants *Aechmea sp.* and *Guzmania sp.*, are only some of the common bromeliads used as decorative house plants by many. Possibly the most famous bromeliad in our agriculture trade is *Ananas comosus*, the pineapple. Bromeliads are unique because all 3000+ species are found within the tropical and sub-tropical climates of the continental Americas with an exception of a single species found in Republic of Guinea, Africa.

The puya genus are terrestrial bromeliads, meaning they grow on land. In comparison to epiphytes which grow without soil such as tillandsias. Puyas are native to southern Central America and the Andes Mountains. Our Sapphire Tower is native to the Andes, and is found along northern Chile. Many species including *Puya alpestris* are monocarpic. This means that once the plant flowers, it dies; which is why seeing a Sapphire Tower in person is such a breathtaking sight.

Like many bromeliads, puyas also pup – meaning that the plant produces a new plant at its base. This pup is genetically



Photos: Rachel Cobb

identical to the mother plant and continues the life cycle. As the Sapphire Tower grows and ages, a single plant can range over 2' tall and 2' wide. As the plant continues to pup, it begins to clump, reaching a height over 4' tall. Including the many flower spikes that one clump can produce, the Sapphire Tower can turn into a rather large specimen plant for any garden.

The Sapphire Tower can be a unique plant to any xeriscape landscape here in Southern California. If you plan to introduce this to your garden, be warned... its beauty does not come unguarded. The *Puya alpestris* has barbed spikes along the edge of its leaves. Gloves when working with this plant is highly recommended!

Like other bromeliads, the Sapphire Tower requires very little water to survive. However, if you are looking for that gorgeous blue flower to bloom, extra water will be a necessity. The puyas tend to bloom in late spring after our winter rains.

"If you have never had the opportunity to gaze upon this truly unique specimen in person or if you make it a tradition to see the Sapphire Tower in all its glory at the Garden, be sure not to miss the blooms of 2019," says SDBG Horticulture Manager Dylan Connolly. "For those green thumbs and enthusiasts out there, be sure to keep an eye on our plant shop. Our propagation team has had tremendous success sowing Sapphire Tower seeds collected from our 2017 super bloom at the Garden and we will be selling them there soon. You can take home this iconic puya and enjoy its wonder in your own backyard!"



# Youth Education

## Seeds of Wonder • Hamilton Children's Garden

For questions regarding Youth Education and our Children's Gardens, please contact Susanne at [SOW@SDBGarden.org](mailto:SOW@SDBGarden.org).



### Garden of Lights

December 1 – 23 & 26 - 30

Holiday-themed activities for children will be offered during Garden of Lights. For more information, please see page 5 or visit our website at [SDBGarden.org/lights.htm](http://SDBGarden.org/lights.htm)



### Birthday Parties for children

On Saturdays and Sundays, we reserve the picnic area in Seeds of Wonder for Birthday Parties and provide special activities like plant potting, rock painting, easel painting and bubble play. Please visit our website at [SDBGarden.org/birthday.htm](http://SDBGarden.org/birthday.htm) for detailed information and pricing or contact Susanne at [SOW@SDBGarden.org](mailto:SOW@SDBGarden.org), if you would like to book a party.

### Guided Youth Tours and Programs

Information and tour request forms for self-guided and docent-guided group visits can be found on our website at [SDBGarden.org/tours-youth.htm](http://SDBGarden.org/tours-youth.htm)

#### General Tour (Grades 1 through 6)

Students will visit different areas of the Garden and learn basic facts about some of the plants. A typical tour visits the Bamboo Garden, the Subtropical Fruit Garden, the Herb Garden, the Rainforest, the Desert Gardens, and the Mediterranean Garden.

#### Plant Adaptation (Grades 2 through 4)

Students will visit the Desert Garden and the Rainforest and learn how plants have adapted to their environment.

Students work in small teams to make observations and recordings in a field notebook. Docents use props to help students understand how these adaptations "work."

#### Native Plant Native People (Grades 2 through 5)

Students will visit the Garden's Native Plant Native People Trail and learn about native Southern California plants, and how some of these plants were used by the Kumeyaay people for food, medicine, building materials, and other purposes.



#### Pollinator Program (Grades 2 through 5)

Hands-on activities will be used to instruct students about the anatomy of flowers and insects, and how plants and pollinators work together. Special emphasis will be placed on the importance of pollination for food production. Students will study pollinators first-hand in the Garden, while recording their observations in a field notebook. This program is available April through June.

#### Climate Science for Kids (Grades 2 through 4)

This 30-minute, interactive program raises awareness on problems associated with climate change, and offers age-appropriate solutions on how students can reduce their carbon footprint. This program can be combined with the Pollinator Program, or a general tour.

A generous grant from SDG&E provides funding for a limited number of Climate Science and Pollinator Programs for Title 1 students.



A  Sempra Energy utility®



### Ongoing Programs for Children

Ongoing weekly programs for children are free with paid admission or Garden membership. Please check our website for a detailed description and schedule of programs at [SDBGarden.org/kids.htm](http://SDBGarden.org/kids.htm)

# Twenty Years of Doubling Donations!

By Carolyn Zollars  
Director of Development

Elf Mitton has been a volunteer/docent at the Garden since 1997. You may know her through her involvement with the Fall Plant Sale which she has been helping with since she started volunteering here. What you may not know is that Elf worked for Edison International for 28 years including 14 years as a Sr. Administrative Analyst at San Onofre Nuclear Generating Station, until she retired in 1994. She is a member of Edison's VOICE - Volunteers Organized in Community Enrichment.

Elf talks about what a wonderful company Edison has always been. Community enrichment is a huge part of their culture and values. The company takes good care of their employees as well as the communities in which they work. Elf has had Edison match the dollar value of the hours she has donated volunteering here every year for the past 20 years! This has allowed her to double her own donations to San Diego Botanic Garden! Many people do not realize that the company they work for, or are retired from, provides matching gift donations. Here are some interesting facts about matching gifts programs:

- 65% of Fortune 500 companies offer matching gift programs
- \$2-\$3 billion is donated through matching gift programs yearly
- \$6-\$10 billion in matching gift funds goes unclaimed annually
- About 9% of employees participate in matching gift programs
- The top 10 matching gift companies average a match of up to \$47,500 per employee per year!



Elf with Edison's 2018 donation check.

**You can go to the Garden's website and click on the 'Support' tab and click on the 'Match Your Donation' menu link to see if your company has a matching gift program. This is a wonderful way to double your donation (or more!) to the Garden! You can normally process this match donation online in a matter of minutes.**

It is a nice benefit of your current or past employment to get an additional donation for a deserving nonprofit like our beautiful Garden. It is sad to think that \$6-\$10 billion in matching funds goes unpaid each year. We are grateful to Elf and Edison International for 20 years of donating to the Garden to help further our mission of connecting people of all ages with plants and nature.

## Classes continued from page 6

### Two House Plants Kokedama Workshop Saturday, November 24, 10 – 11:30 am

Kokedama is a traditional Japanese Living Art form where moss is used as a container for a plant. In this interesting and hands-on workshop, we will make Two House Plant Kokedamas! You will learn the skills behind Kokedama and how to make your very own. Fee includes all of the supplies, including two house plants, moss, soils, etc. This is a unique, fun-to-make Kokedama workshop that you can take home and enjoy, or give as a wonderful living gift. Instructor: Kodema Forest

**Cost: Members \$15, non-members \$18, plus a \$32 per student materials fee paid directly to the instructor at the class. Please register by November 16.**

### Succulent Christmas Wreath Tuesday, November 27, 9 am – 2 pm

Take home a beautiful Christmas succulent wreath that you make yourself. Taught by the SDBG succulent Wreath Team.

**Cost: Members \$95, non-members \$112, fee includes materials. Register by November 20.**

### Christmas Succulent Ball Ornament Shop Thursday, December 6, 9 am – 2 pm

Take home a beautiful Christmas succulent ornament that you make yourself. Taught by the SDBG succulent Wreath Team.

**Cost: Members \$35, non-members \$42, fee includes materials. Register by November 29.**

### Holiday Wreath Workshop Saturday, December 8, 10 am – 2 pm

Build a beautiful full-sized, mixed greens wreath to decorate your home for the holidays. This technique can be applied to items often found in your garden. These gorgeous wreaths also make great gifts! Instructor: Dianna Burke.

**Cost: Members \$35, non-members \$42, plus a \$50 materials fee paid to the instructor at the class. Please register by November 30.**



**Give A Class  
Great Gift Idea!**

# Volunteer and Docent News

## August Volunteer of the Month: **MARY JOHNSTON**

Mary's love of plants and flowers began as a child growing up in Joliet, IL, where her family grew lily-of-the-valley and lilacs. Her family relocated to San Diego during her college experience at the University of Arizona. Mary soon followed them to America's Finest City and joined Continental Airlines as a flight attendant for the next 15 years. Mary's other career choices included the hospitality and home construction industries.

Mary has always loved our Garden and became a docent in 2016. She is a member of the Bamboo Garden beautification team and enjoys the friendship and fun times spent with such great colleagues! She also can be seen volunteering at our many events, including Gala in the Garden, Garden of Lights, the Chocolate Festival and the Fall Plant Sale.



## September Volunteer of the Month: **JOHN LUNDBLAD**

John was born in San Jose, CA, and has been married to his wife, Pam, for 51 years! They enjoy spending time with their son and daughter's families, including four grandchildren.

John served as a Lutheran pastor for 30 years in California, Utah and Jerusalem. He became a Garden volunteer soon after retiring from the City of Oceanside in 2012 as a Management Analyst for the Neighborhood Service Department.

Hiking, camping and backpacking stirred his interest in gardening and he is especially drawn to desert plants. At the Garden, John finds it very gratifying to start a project and see it through to completion, whether it is cutting back Eve's Needle cacti or working as a Carpentry team member.



---

## Docent Meetings Everyone Welcome! First Wednesday of the Month

9:30 am - 12 pm • Arrive at 11 am for the program

**October 3:** Stacy Fattaleh, Fall Plant Sale Chair for 10+ years, will wow us with some of the special new plants that the Propagation Team will be introducing at the Fall Plant Sale this year. Exciting!

**November 7:** Holiday craft sale and potluck lunch.

**December:** No meeting due to Garden of Lights crafts in the Ecke Building.



Photo: Rachel Cobb

# Thank You, Donors!

Thank You To Our Donors! San Diego Botanic Garden wishes to thank the following donors for cash and in-kind gifts, including our Benefactor and Larabee Society memberships made between **April 24, 2018 – July 23, 2018**.

If you see an error, our sincere apologies! Please reach out to Carolyn at 760/436-3036 x216 or email her at czollars@sdbgarden.org. We will be sure to recognize you properly in the next issue. Thank you!

**Donations to this year's Gala in the Garden will be recognized in the January/February/March 2019 issue of Quail Tracks.**

## Gifts of \$10,000 to \$24,999

Christopher and Diane Calkins  
Ann Hoepfner Revocable Trust

## Gifts of \$1,000 to \$9,999

Coastal Community Foundation  
John and Debra DeWald  
ExxonMobil Foundation  
Andra Moran  
Olivenhain Municipal Water District  
San Diego Horticultural Society

## Gifts of \$500 to \$999

Victoria C. Avey

## Gifts of \$100 to \$499

Anonymous  
Theodore and Suzanne Butz  
Del Mar Garden Club  
Ruth and Edward Evans  
Andi and Carl Kosnar  
Local Computer Pros  
Kathleen J. McKee and Jeffrey Davidson  
Maureen and Ronald McMahon  
Jack and Anne Wadlington

## New or Renewing Benefactor Society Members

## Cork Oak \$2,500 - \$4,999

Mr. Jeff H. Friestedt and Mrs. Mary J. Friestedt

## Dragon Tree \$1,200 - \$2,499

Mr. and Mrs. Richard Borevitz  
Mrs. Francesca W. Filanc  
Mr. and Mrs. Paul Judge  
Mrs. Suzanne H. Schaefer

## New or Renewing Larabee Society Members

## Fellow \$600 - \$1199

Mr. Deane Hall Jr. and Mr. Bradford W. Bates  
Ms. Alison Hiers  
Mr. Mark Huffman and Mrs. Davielle Huffman  
Dr. Meral Omurtag and Mr. Brendan Biamon

## Patron \$300 - \$599

Mr. and Mrs. Don K. Barth  
Martin and Kellie Cassell  
Mary and Ed Cozza  
Mr. and Mrs. Ralph Crane  
Cindy and Mark Dankberg  
Karen M. Davies  
Allison and Mark DeGeorge  
Mr. and Mrs. Harold P. Dunn  
Mr. Alvis Eoff and Mrs. Paula Eoff  
Mrs. Phyllis G. Flechsig  
Dr. Wendy Graham and Dr. Tom Bartol  
Dr. Lourdes Guerrero-Tiro  
Ms. Julia W. Halliday and Mr. John Wertz  
Fran and Bobby Hinostro  
Mr. and Mrs. Lambert A. Ling  
Mr. Gary Martin and Mrs. Bella Rose Martin  
Mr. and Mrs. Patrick Powell  
Mr. and Mrs. William Rucker  
Sally and James Sandler  
Mr. Steve Seaborg  
Mr. and Mrs. John Stewart  
Mr. Mark C. Storer and Ms. Toni Storer  
Mrs. Linda D. Wagner and Mr. Winfield J. Wagner

## Steward \$150 - \$299

Ms. Geraldine Afshari  
Mr. and Mrs. Charles Anderson  
Ms. Kellee Bartha  
Mr. Nathan Bear and Mrs. Lindsay Bear  
Ms. Allison Blackwell and Mr. Rob Blackwell  
Dr. and Mrs. Michael R. Brams  
Mrs. Sarah Clayton  
Dr. and Mrs. Mike Criqui  
Mr. and Mrs. Mark D'Ambrosi  
Mrs. Carol Eblen  
Mr. and Mrs. Bruno Eschbach  
Mrs. Julie Galvin  
Dr. Mayra Garcia  
Mr. Ray Ghanbari  
Mrs. Linda Giase-Froese  
Mrs. Dinia Green and Mr. Evan Green  
Dr. and Mrs. William F. Green, Jr.  
Ms. Trina Hester  
Mrs. Jessica Judd  
Mr. Mike Kalichman and Ms. Linda Roux  
Ms. Linda Kewin and Mrs. Megan White  
Ms. Julie Kirtland  
Mr. Jack Ladinsky and Ms. Loan K. Pham  
Mr. and Mrs. Richard MacGurn  
Ms. Faith Meakin and Mr. Edward J. Frederick  
Ms. Karen O'Neill and Mr. Robert O'Neill  
Ms. Regina A. Rose and Ms. Patricia Rose Toy  
San Diego Horticultural Society  
Mr. and Mrs. Jeff A. Shaver  
Ms. Jan Westman  
Mrs. Carolyn Witman  
Mr. and Mrs. John You

## Matching Gifts of \$500 and Up

Edison International  
thanks to Elf Mitton

## Tribute Gifts

*In Memory of  
Chips Dreilinger*  
Anna Dreilinger

*In Memory of Margaret and  
Peter Jones*

Nancy Bahr Kelly and  
Anthony Kelly

*In Memory of Joan Swyer*  
Wayne and Nancy Harder

*In Honor of Phyllis Bates*  
Linda Erich

*In Honor of Dad*  
Jillian Monshausen

*In Honor of Patrick and  
Miriam*  
Lew Tillman

## In-kind Gifts valued at \$500 - \$5,000

Bullis Bromeliads  
Susan and Bruno Eschbach  
Douglas Gates  
Hawaiian Sunshine Nursery  
Los Angeles County Arboretum and Botanic Garden  
Marie Selby Botanical Gardens  
Walt Meier  
Montgomery Botanical Center  
Naples Botanical Gardens  
Kent Scott and Debbie Heintschel  
The Kampong  
Zoological Society of San Diego

Special Note: For memberships or donations paid on a monthly basis, the total annual donation is recognized once each year.

# The tax-saving clock is ticking!

**N**ow is the time to take steps to maximize your tax savings before the year is over. Congress doubled the standard deduction to \$12K for single tax filers and \$24K for married filers starting in 2018. It is best to look at the ways you can lower your taxes before the year is over!

Charitable contributions allow you to support a charity like the Garden and lower your taxes at the same time. You can choose to pay Uncle Sam or further our mission to connect plants with people! Some tax saving ideas follow.

## Make a gift of stock you have held for at least a year.

You receive a tax deduction for the market value of the gifted securities on the date of the donation and you avoid paying tax on the unrealized gains of the investment. A charitable stock transfer is simple to complete and allows an easy way for people to make a significant gift. You can designate your donation “where needed most”, for example towards our year-end appeal or you can support a special project or program near and dear to your heart.

## Contribute your IRA required minimum distribution (RMD) to charity.

If you are 70 ½ or older, the IRS requires you to withdraw a certain amount from your IRA whether you need the funds or not. And, you must pay income tax on this distribution. For many IRA holders, the taxes are significant. A great solution is to make a direct transfer of your RMD, up to \$100K, to the Garden. This way, you can make a significant donation while lowering your income and taxes for the year. Your donation can be directed to the greatest need or earmarked for a special need.



Members Tom and Carla Applegate at an SDBG event.

## A Zero-Tax Gift and Sale

By gifting part of an asset to a nonprofit prior to the sale (i.e. real estate, a business or an appreciated asset), you will receive a tax-saving charitable deduction to eliminate capital gains tax. Thinking ahead makes this possible.

With proper planning, you can lower or even eliminate your taxes and support a deserving nonprofit like SDBG, at the same time. It is always important to consult your tax advisor.

You can access helpful gift illustrations on our website at [SDBGarden.org](http://SDBGarden.org), click on **SUPPORT** tab and select Planned Giving.

Now is the time to determine how best to maximize your tax savings before the year is out. For more information, contact Director of Development, Carolyn Zollars at 760/436-3036, x216 or on her cell at 760/ 822-5164 or you may email her at [czollars@SDBGarden.org](mailto:czollars@SDBGarden.org).

## Become a Benefactor Society Member Today!



Jaleh and Robert Brunst, M.D. enjoying last year's Benefactor Dinner.

Each November, Benefactor Society Members enjoy an elegant dinner in the Garden in honor of their generosity (kicking off the holiday season.) Scheduled just prior to the Garden of Lights, the grounds are ablaze in festive lights! You, too, can join this group for a donation of \$1,200 or more. Most of the membership fee is tax deductible, with the exception of the fair market value portion. The Benefactor Society began more than 20 years ago with the initiation of the Garden's own 501(3)(c) foundation. It remains strong today! Benefactor Members receive invitations to other exclusive receptions including The Fall Plant Sale pre-sale, Spring Planting Jubilee and the summer sculpture event, in addition to other benefits. Call Josh Pinpin today at 760/ 436-3036 x214 to learn more and/or to become a Benefactor Member!



P.O. Box 230005 12/18  
Encinitas CA 92023-0005

NONPROFIT ORG  
US POSTAGE  
PAID  
SAN DIEGO CA  
PERMIT NO 751

## Become a Corporate Partner TODAY!

As a Corporate Partner, you will receive recognition on our website and on signage in the Garden, invitations to special events, and other attractive benefits for each level of support. For information on how your organization can support the Garden as a Corporate Partner, please contact Doreen Prager at 760.436.3036 x 218 or by email at dprager@sdbgarden.org.

## Our Appreciation to our Corporate Partners

We thank our corporate and foundation partners for their annual support of the Garden's mission to inspire people of all ages to connect with plants and nature. These organizations provide unrestricted cash or in-kind contributions, which fund our educational programs and the overall care and maintenance of our 37-acre beautiful botanical oasis. Be sure to patronize our Corporate Partners!

### PLATINUM LEVEL \$10,000 or more

Agri Service, Inc.

Briggs Nursery and  
Tree Company

Encore Event Entertainment

Hunter Industries, Inc.

JRS Management and  
Construction, Inc.

The Leichtag Foundation

Olive Hill Greenhouses

San Diego County Water  
Authority

San Diego Gas & Electric

### GOLD LEVEL \$5,000 - \$9,999

Bishop's Tree Service

City of Encinitas

Gilchrist Aesthetic and Medical

Dermatology

Olivenhain Municipal Water District

San Dieguito Water District

U.S. Bank Foundation

### SILVER LEVEL \$2,500 - \$4,999

Best Western Inn, Encinitas

EDCO Waste & Recycling Services

Fire Protection Products, Inc.

Flavor Chef Catering

Marmol Radziner

Scott Fence Company

Union Bank

### BRONZE LEVEL \$1,000 - \$2,499

Affairs Party Rental

Brothers Signature Catering & Events

Encinitas Rotary Club

HomeAdvisor

Jimbo's...*Naturally!*

Local Computer Pros

North County Blind Co., Inc.

Print & Copy House

Stockham Media

### STRATEGIC PARTNERSHIPS

Climate Science Alliance

Community Resource Center

E3 Cluster

Become a corporate  
partner TODAY!