

# SAN DIEGO BOTANIC GARDEN

## ANALYSIS OF DOCENT & VOLUNTEER HOURS

### Background

At the Docent & Volunteer General Meeting on January 4, 2017 our Docent Chair, Mary Friestedt discussed the suggestion that we reduce the number of required Docent hours from 80 to 60 per year. The requestor felt that we would have more docents if we reduced the number of required hours.

A committee was formed to analyze the impact of this suggestion, and make a recommendation as to whether we should proceed. The committee consists of four Docents: Gail Earnest, Charlie Garren, Jane Hunt and Mo Price.

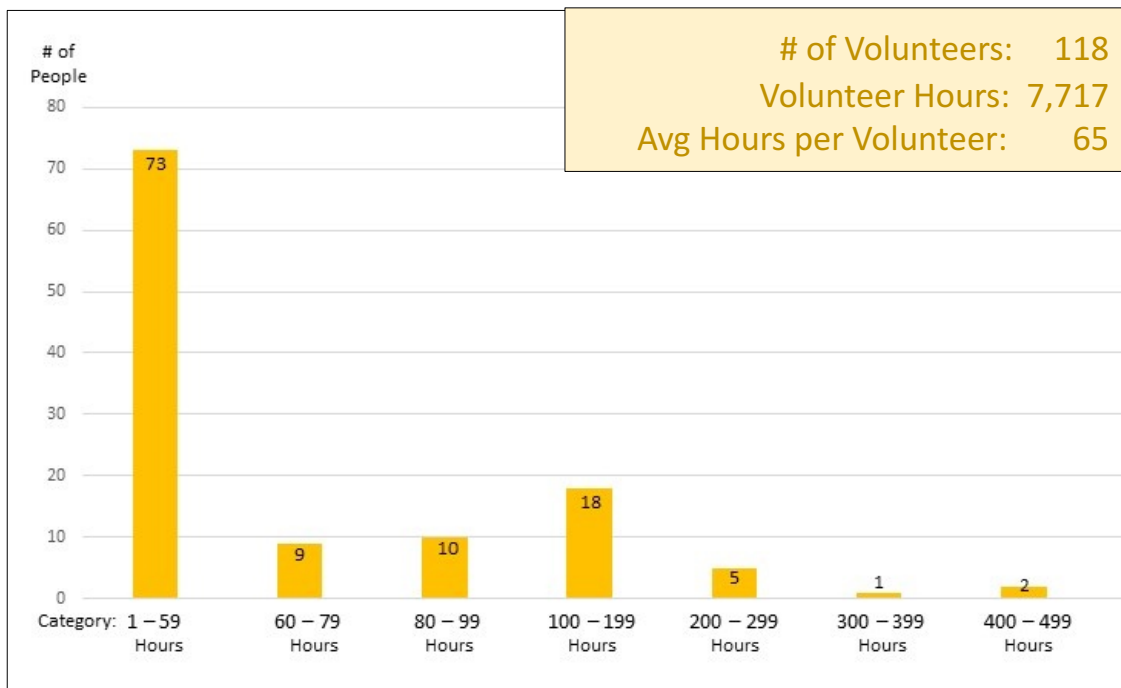
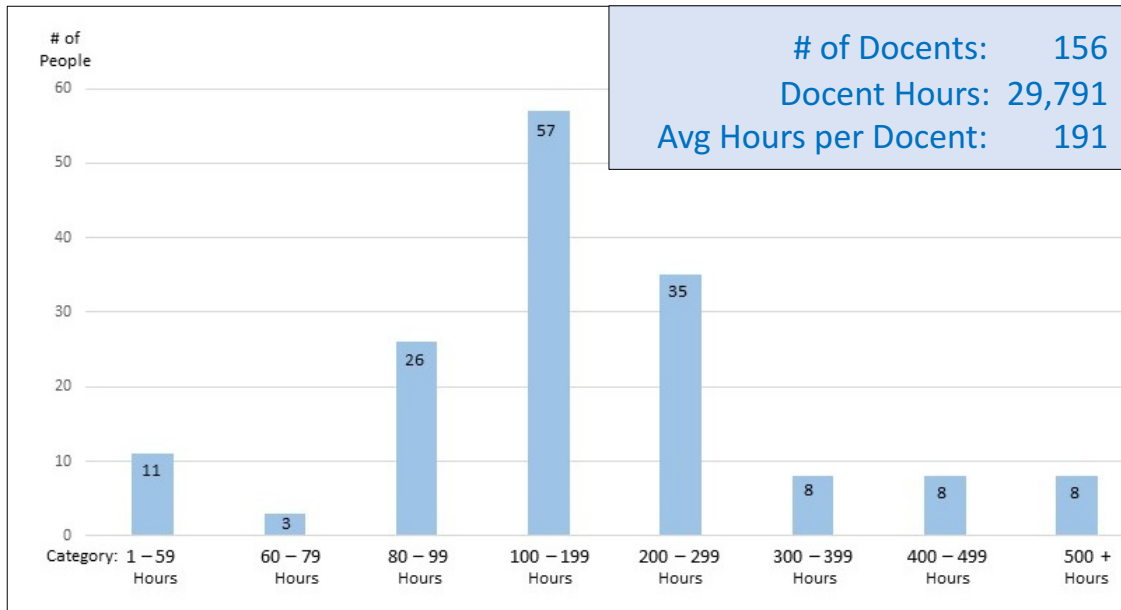
After much analysis and discussion, the committee shared its recommendation at the February 1, 2017 General Meeting. The committee recommended that it would *not* be judicious to reduce the number of required Docent hours. This document contains supporting data for this decision and analysis of the hours that Docents and Volunteers record.

Prepared by Gail Earnest & Mo Price, Docents

February 17, 2017

# SAN DIEGO BOTANIC GARDEN

## 2016 DOCENTS & VOLUNTEERS CATEGORIZED BY HOURS



February 17, 2017

## SAN DIEGO BOTANIC GARDEN

### DOCENTS

<u>YEAR</u>	<u>TOTAL HOURS</u>	<u>NUMBER PEOPLE</u>	<u>AVG HOURS PER PERSON</u>
2014	27,019	131	206
2015	28,330	140	202
2016	29,791	156	191

- Yearly increase in the number of active Docents
- 2014 to 2015: 6.9% increase
- 2015 to 2016: 11.4% increase
- Docent average hours worked slight decrease in 2016
- Docent recruitment efforts are strong

02/15/17

## SAN DIEGO BOTANIC GARDEN

### VOLUNTEERS

<u>YEAR</u>	<u>TOTAL HOURS</u>	<u>NUMBER PEOPLE</u>	<u>AVG HOURS PER PERSON</u>
2014	8,908	134	67
2015	9,975	136	73
2016	7,717	118	65

- Number of Volunteers decreased by 13% from 2015 to 2016 with a drop in total hours worked
- Opportunity for growth in number of Volunteers and hours

02/15/17

# SAN DIEGO BOTANIC GARDEN

## 2016 HOURS BY AREA

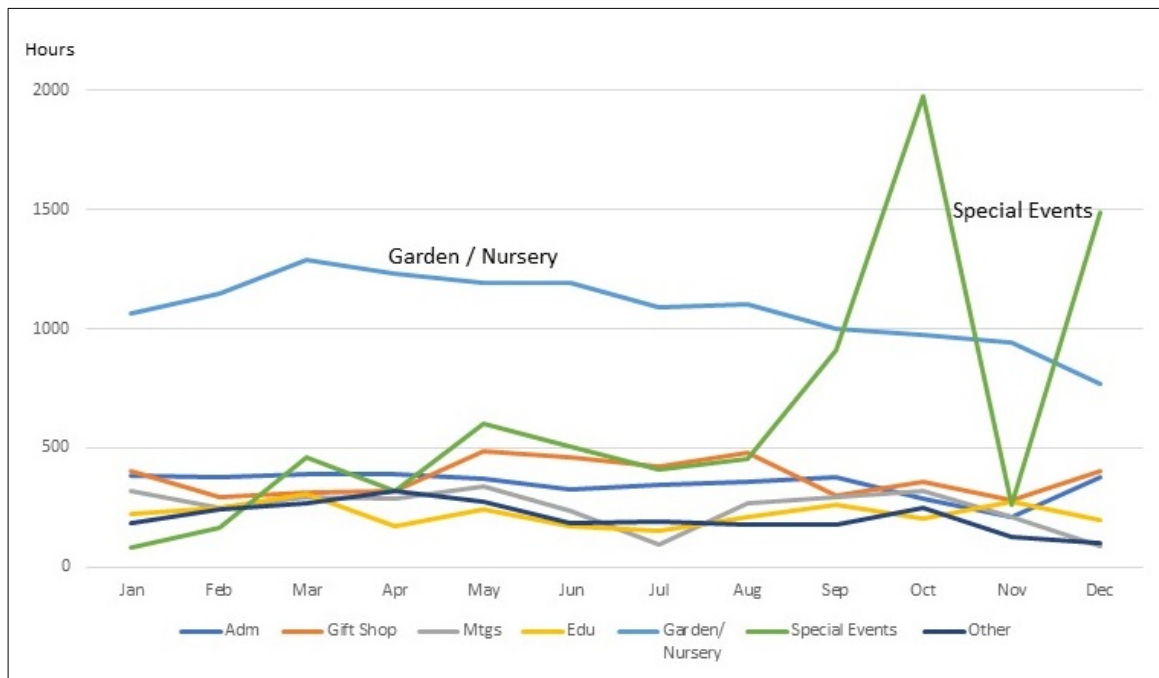
### DOCENTS



### VOLUNTEERS



## 2016 TOTAL MONTHLY HOURS BY AREA DOCENTS & VOLUNTEERS COMBINED



**SAN DIEGO BOTANIC GARDEN**  
**DOCENT AND VOLUNTEER HOURS BY AREA**  
**2016**

	<u>DOCENT 2016</u>		<u>VOLUNTEER 2016</u>	
	<u>HOURS</u>	<u>%</u>	<u>HOURS</u>	<u>%</u>
ADMIN	3,559	12%	634	8%
GIFT SHOP	4,063	14%	454	6%
MEETINGS	2,550	9%	452	6%
EDUCATION	2,170	7%	494	7%
GARDEN	9,166	31%	3,829	50%
SPEC. EVENTS	6,113	20%	1,530	19%
OTHER	<u>2,170</u>	<u>7%</u>	<u>324</u>	<u>4%</u>
<u>TOTAL</u>	29,791	100%	7,717	100%

02/15/17